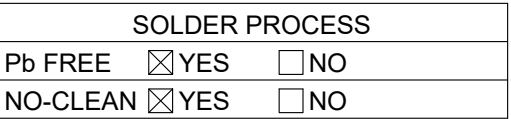



REVISIONS				
ZONE	REV	DESCRIPTION	DATE	APPROVED
	A	INITIAL RELEASE	10/11/22	NICOLE
	B	UPDATE	12/16/24	KATE

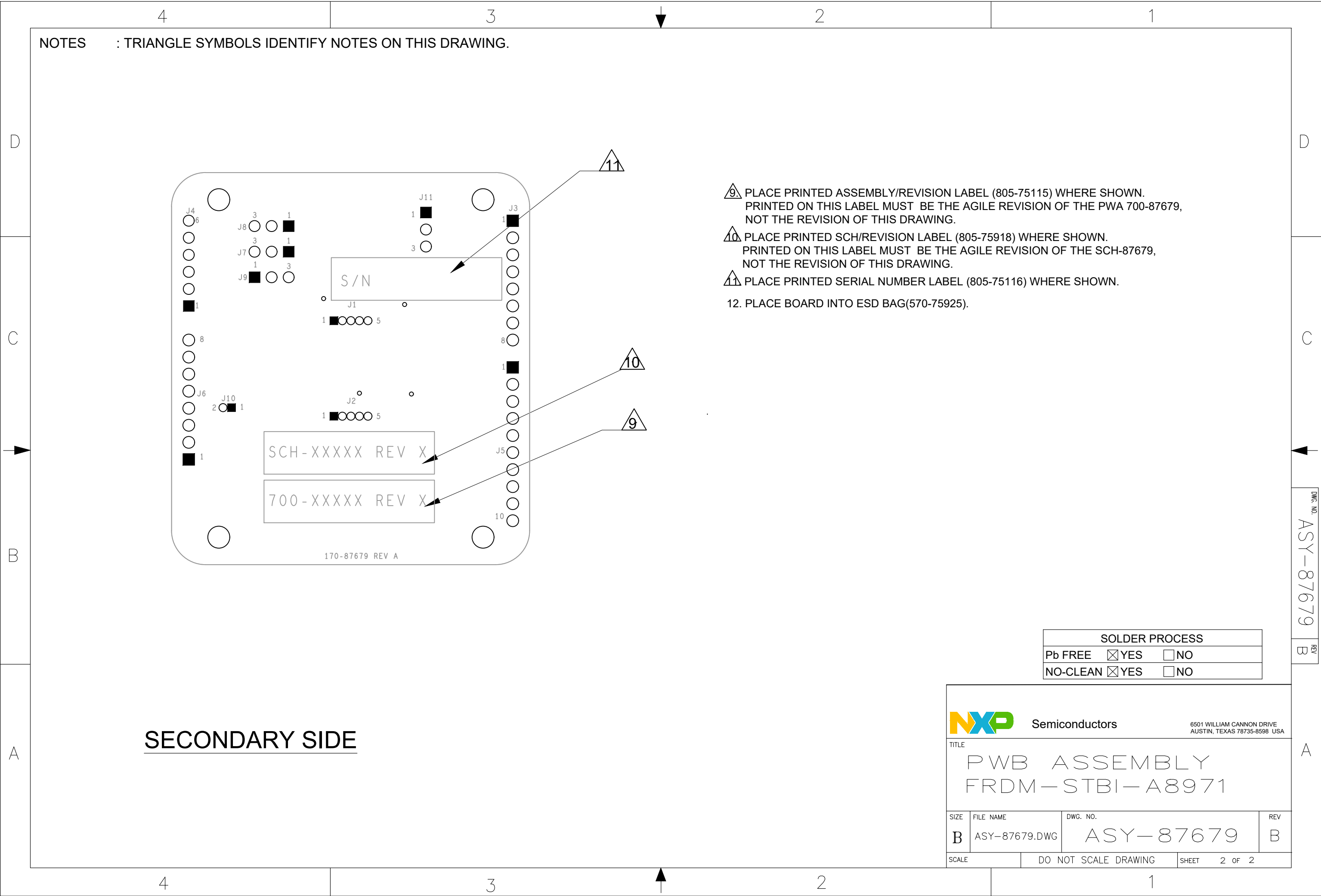
1. ALL COMPONENTS MUST BE ABLE TO WITHSTAND THE Pb-FREE ASSEMBLY PROFILES DESCRIBED IN IPC/JEDEC J-STD-020C (LATEST VERSION)
2. WORKMANSHIP SHALL CONFORM TO IPC-A-610 (LATEST REVISION) - CLASS 2 STANDARD.
3. PART SUBSTITUTION CRITERIA : -
ALL COMPONENT SUBSTITUTIONS MUST BE APPROVED AND DOCUMENTED BY NXP.
4. MAXIMUM LEAD PROTRUSION ON PRIMARY AND SECONDARY SIDE OF PRINTED WIRING BOARD IS PER IPC-A-610 (LATEST REVISION). EXCEPT J3-J6.
5. IN CASES OF CONFLICT, ALL PLACEMENT LOCATIONS ARE TO BE GOVERNED BY THE X-Y CENTROID FILE, UNLESS EXPLICITLY STATED IN THIS ASSEMBLY DRAWING. SILKSCREEN REFERENCE DESIGNATORS ARE INCLUDED FOR CONVENIENCE ONLY.
6. MEASURE THE PCB WARPAGE LEVEL AT ALL THE STAGES WHICH INCLUDES PCB INCOMING QUALITY INSPECTION, PCBA - IN PROCESS QUALITY INSPECTION AND OUTGOING QUALITY INSPECTION. REFER IP-A-600 AND IPC-TM650 (2.4.22 BOW & TWIST PERCENTAGE CALCULATION).

8. PAY ATTENTION TO U1 ASSEMBLY SINCE NO SOLDER-MASK UNDER IT.



REACH : ALL PARTS, MATERIALS AND FINISHED ASSEMBLY SHALL MEET THE REACH COMMISSION DELEGATED DIRECTIVE (EU) 2015 / 863 OF MARCH 31 2015 AMENDING ANNEX II TO DIRECTIVE 2011 / 65 / EU. A CERTIFICATE OF COMPLIANCE IS REQUIRED UPON REQUEST.

UNLESS OTHERWISE SPECIFIED DIMENSIONS ARE IN INCHES. TOLERANCES ARE: DECIMALS .XX ±.020 .XXX ±.010 ✓ RMS ALL MACHINED SURFACES BREAK ALL SHARP EDGES AND CORNERS, REMOVE BURRS. UNDERLINED DIM. NOT TO SCALE. THIRD ANGLE ORTHOGRAPHIC PROJECTION IS USED.		PART NO. <u>700-87679</u>		 Semiconductors		6501 WILLIAM CANNON DRIVE AUSTIN, TEXAS 78735-8598 USA	
		THIS DOCUMENT CONTAINS INFORMATION PROPRIETARY TO NXP AND SHALL NOT BE USED FOR ENGINEERING DESIGN, PROCUREMENT OR MANUFACTURE IN WHOLE OR IN PART WITHOUT THE CONSENT OF NXP.		TITLE PWB ASSEMBLY FRDM-STBI-A8971			
		--- PUBI (PUBLIC INFORMATION) --- X_ NXP INTERNAL USE ONLY --- NXP CONFIDENTIAL PROPRIETARY					
MATERIAL		APPROVALS DRAWN ROY YANG		DATE 12/16/24			
FINISH		CHECKED BELLA		12/16/24			
HEAT TREAT		DESIGN ENGINEER KATE		12/16/24			
		SIZE B		FILE NAME ASY-87679.DWG		DWG. NO. ASY-87679	
		SCALE		DO NOT SCALE DRAWING		SHEET 1 OF 2	
		REV B					



SECONDARY SIDE

SOLDER PROCESS	
Pb FREE	<input checked="" type="checkbox"/> YES <input type="checkbox"/> NO
NO-CLEAN	<input checked="" type="checkbox"/> YES <input type="checkbox"/> NO

<div><div>NXP Semiconductors</div><div>6501 WILLIAM CANNON DRIVE AUSTIN, TEXAS 78735-8598 USA</div></div>			
TITLE PWB ASSEMBLY FRDM-STBI-A8971			
SIZE	FILE NAME	DWG. NO.	REV
B	ASY-87679.DWG	ASY-87679	B
SCALE		DO NOT SCALE DRAWING	SHEET 2 OF 2